



Q-Port

Introduction to new layout

March 2022

Introduction

Q-Port is a web-based clearing application providing management of the full trade lifecycle, from trade reporting and margin simulation to position management and settlement. Nasdaq will introduce a new version of the application that will be more intuitive and user friendly than the current design.

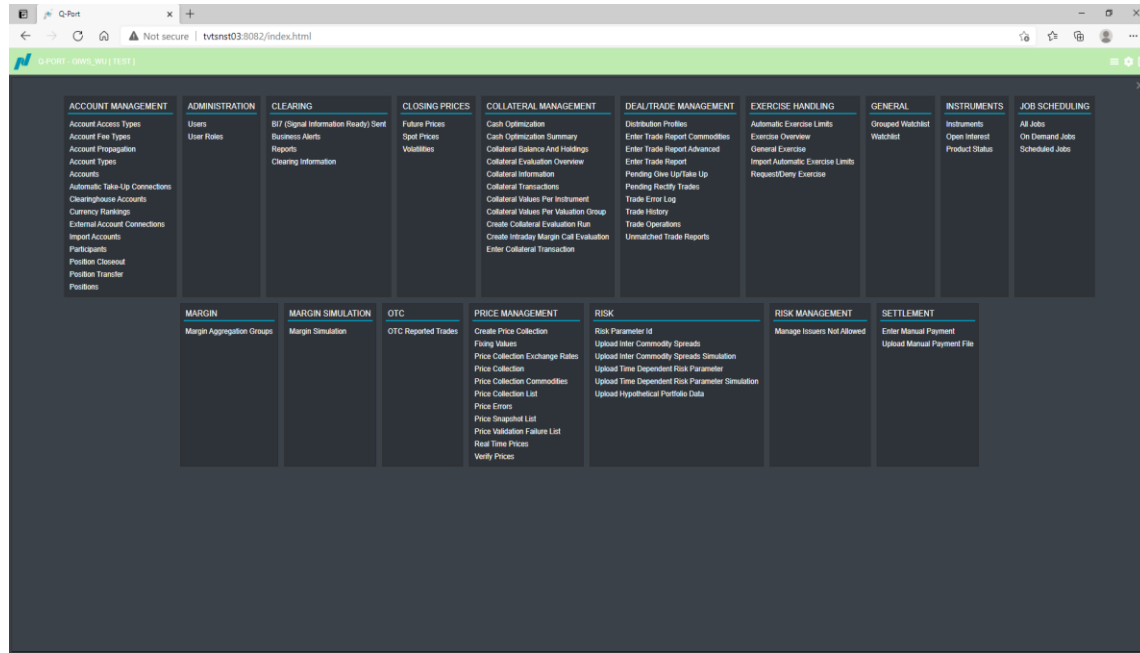
Enhancement Summary

- More flexibility and better user experience with a pop-up windows instead of sub-views. Possibility to have several pop-ups open at the same time
- All views will open as tab views. The tab view can then be re-arranged in the view by dragging and releasing it as docked into another view, or be placed as a popup view on top of other views
- It will be possible to have several browser tabs if you are logged-in with the same user. Just duplicate the main browser tab and you can have multiple workspaces/views. Workspace settings are more accessible and can be reached from the main menu
- New menu toolbar on the left side that is always visible

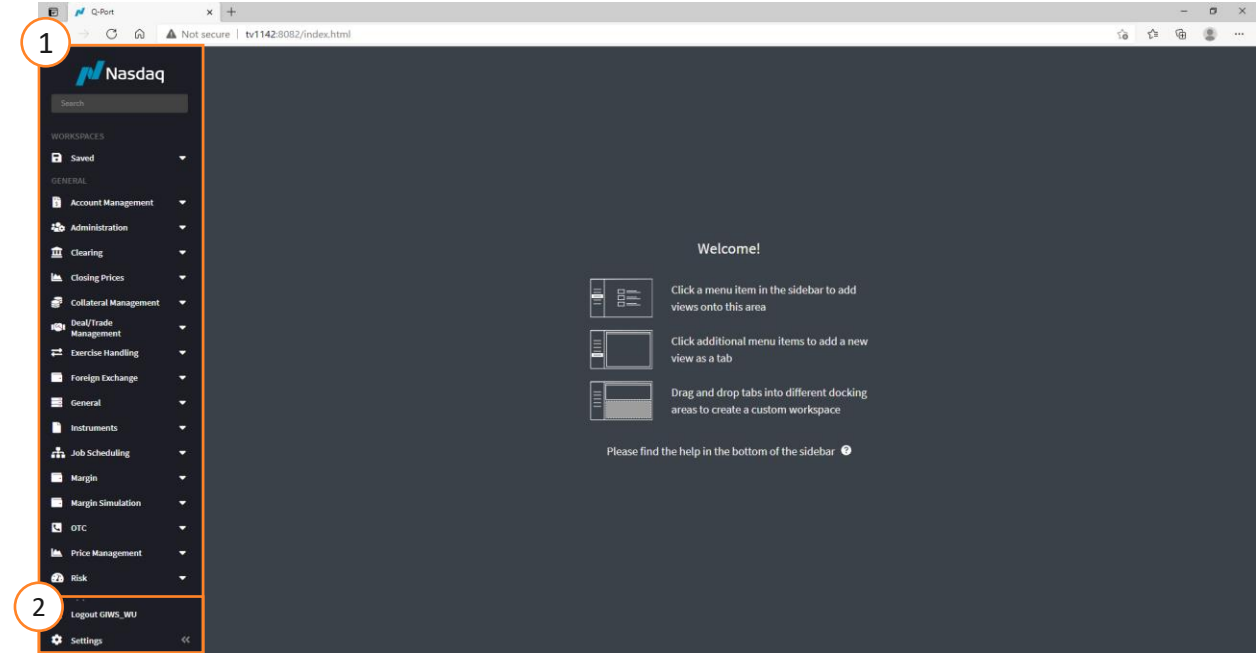


New Layout Manager

Old layout



New layout

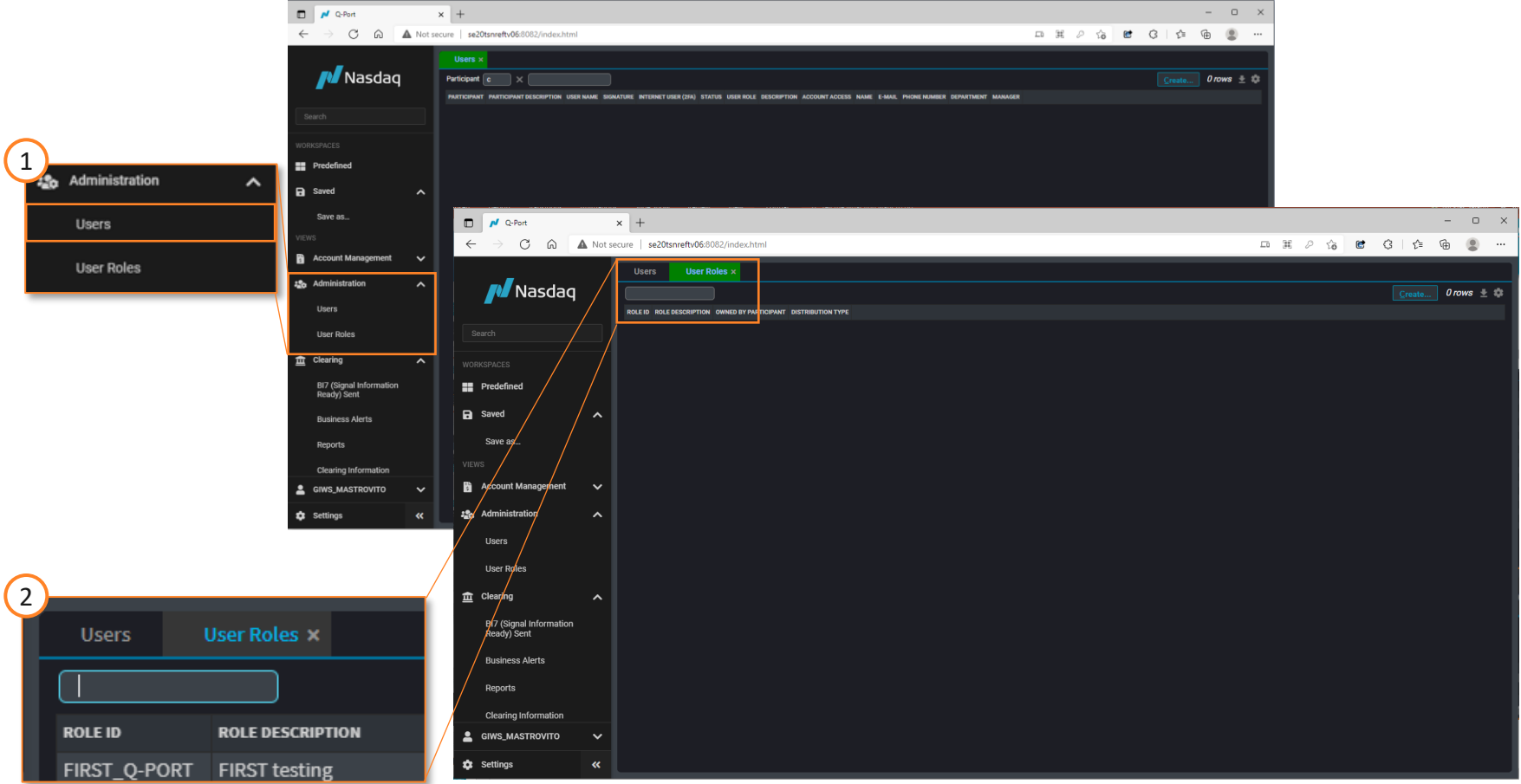


1. Menus are moved to a searchable (collapsible) menu to the left
2. Settings and logout are moved from upper right corner to the bottom of menu

How to work with multiple views

Features

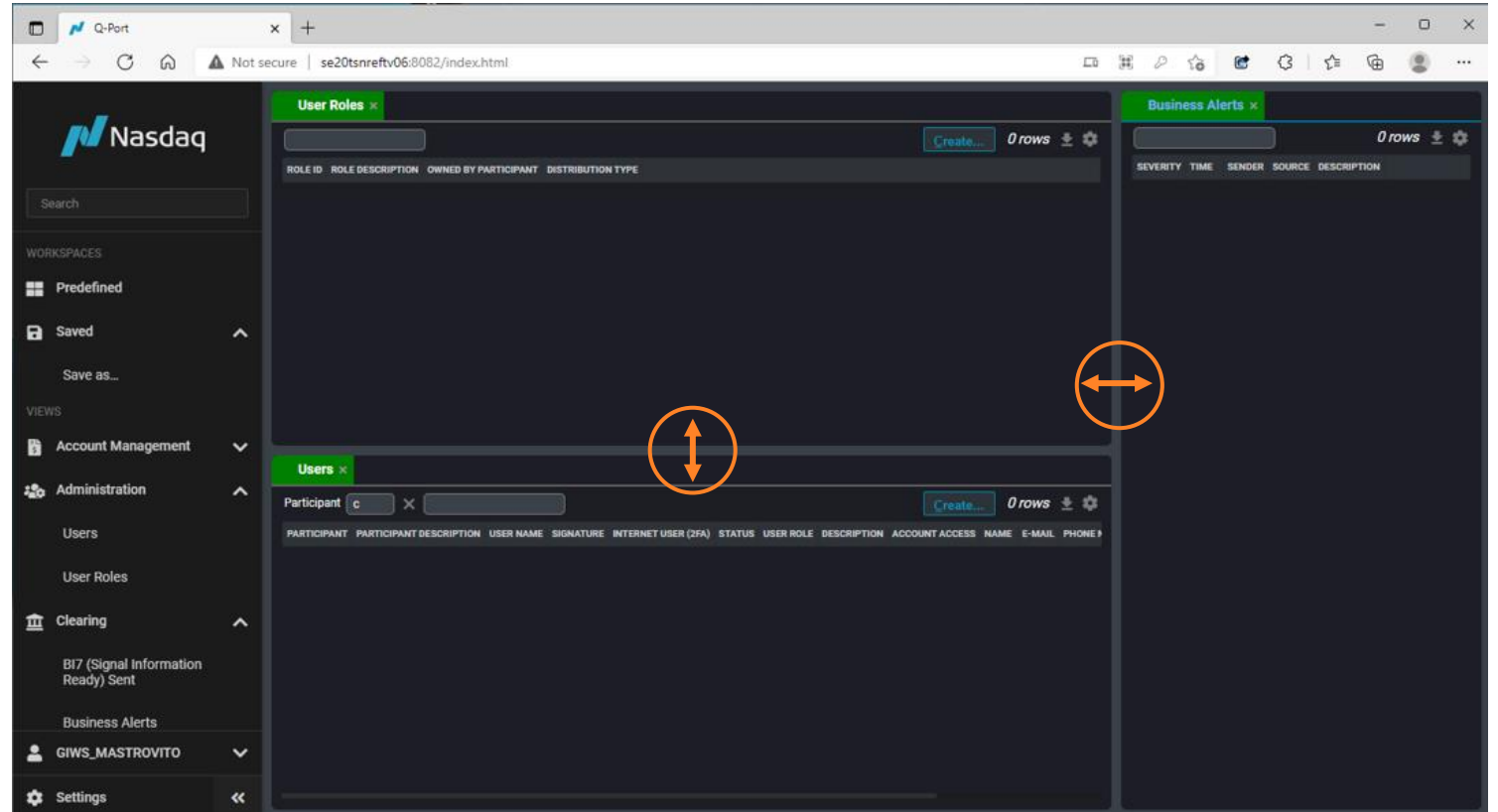
- 1. When a view is clicked in the menu, the view is opened in a tab in workspace area
- 2. Clicking another view in the menu, the view is opened in a new tab. In this example the “User” tab in square one is first opened and then the tab “User Roles”. You can navigate between the tabs, similar to navigating in multiple tabs in a web browser



Adjusting size on views

Simple adjustment

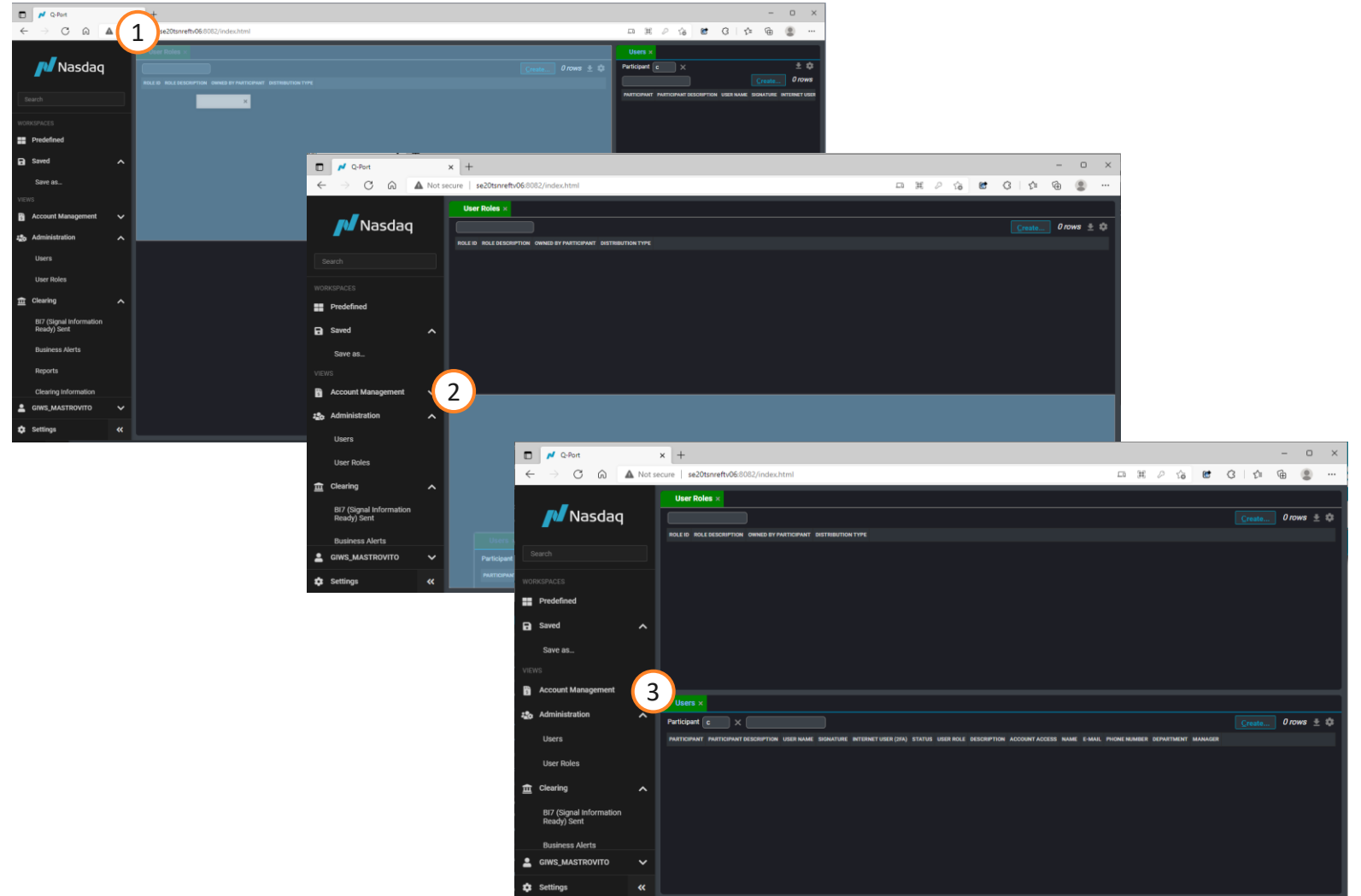
Views may be resized to create the desired workspace by clicking and holding on the border of the view and then drag and drop for the desirable size of the view.



How to create a workspace

Displaying multiple tabs

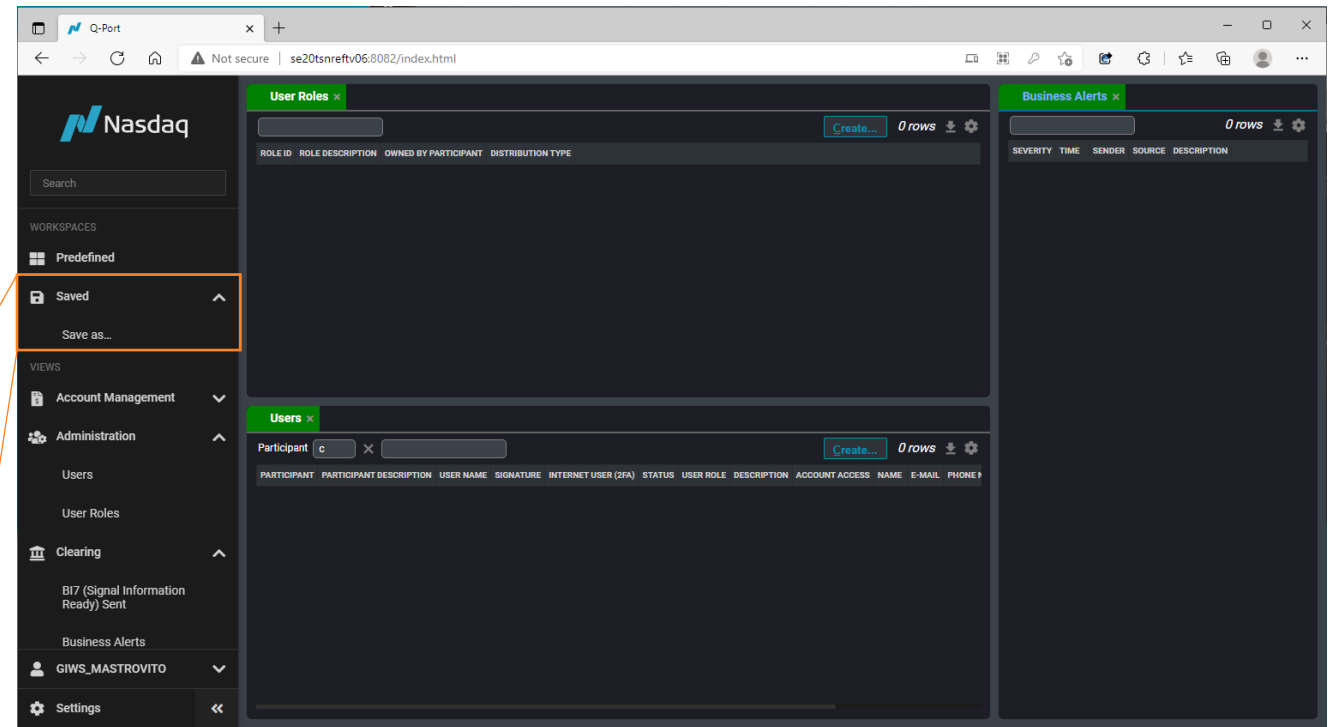
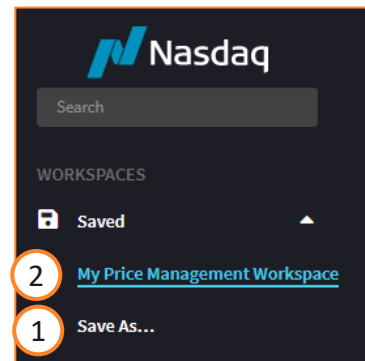
1. Click and hold on the tab title, the view can be dragged around, available docking areas are highlighted in blue.
2. Content in the tab will be displayed in the docked area once it is dropped there.
3. How it looks like when multiple views are opened (the active tab is highlighted).



Saving a workspace

Save and retrieve workspaces

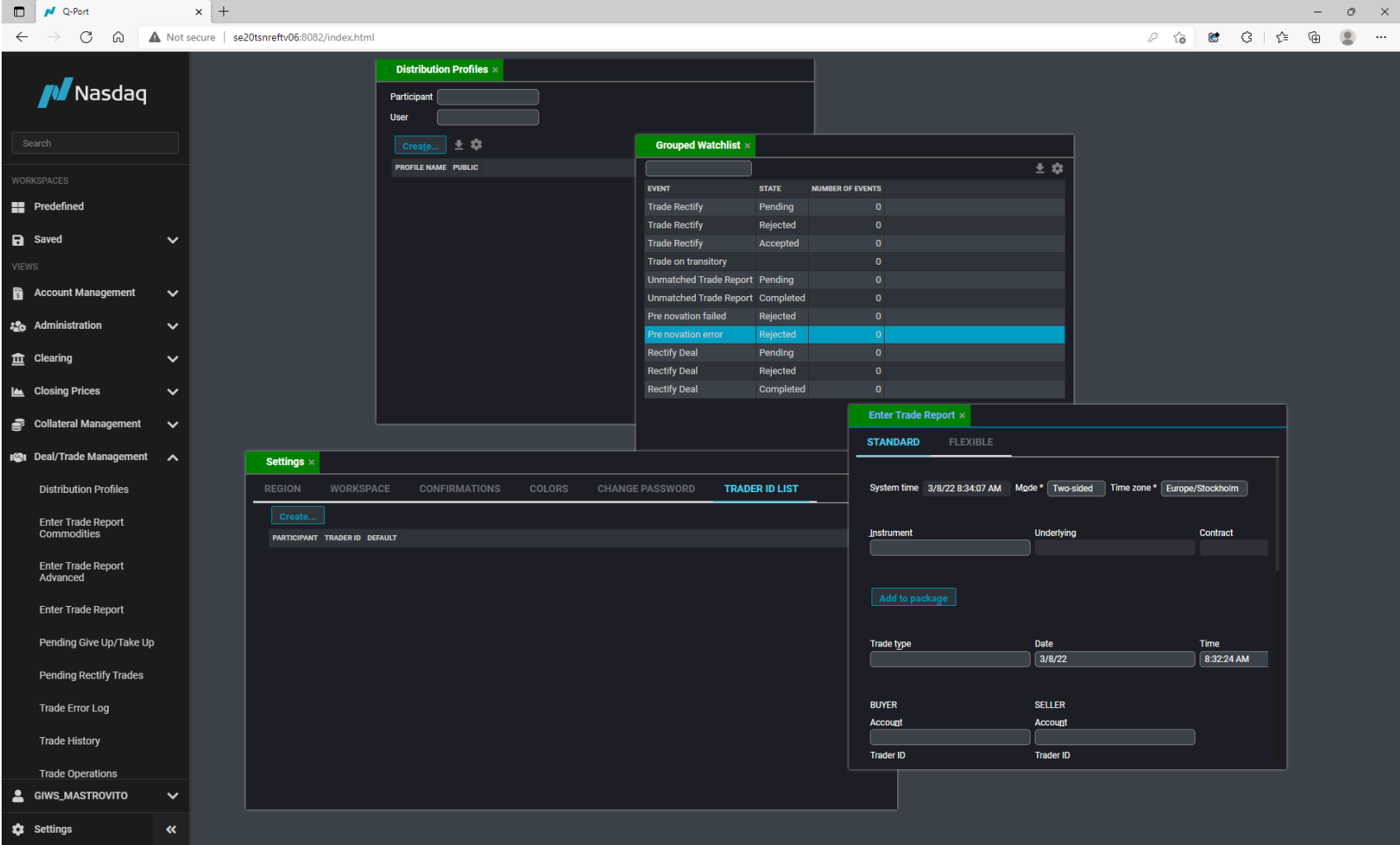
1. The workspace can be saved by clicking “Save as...” in the menu
2. The saved workspaces can be found in the workspaces section in the menu. Note that it is possible to save multiple workspaces



Multiple pop-ups

The new version of Q-Port allows multiple pop-ups.

Any section opened in a tab can then be transformed into a floating window by clicking and dragging it off from the tab section; afterwards the floating window can be positioned anywhere.



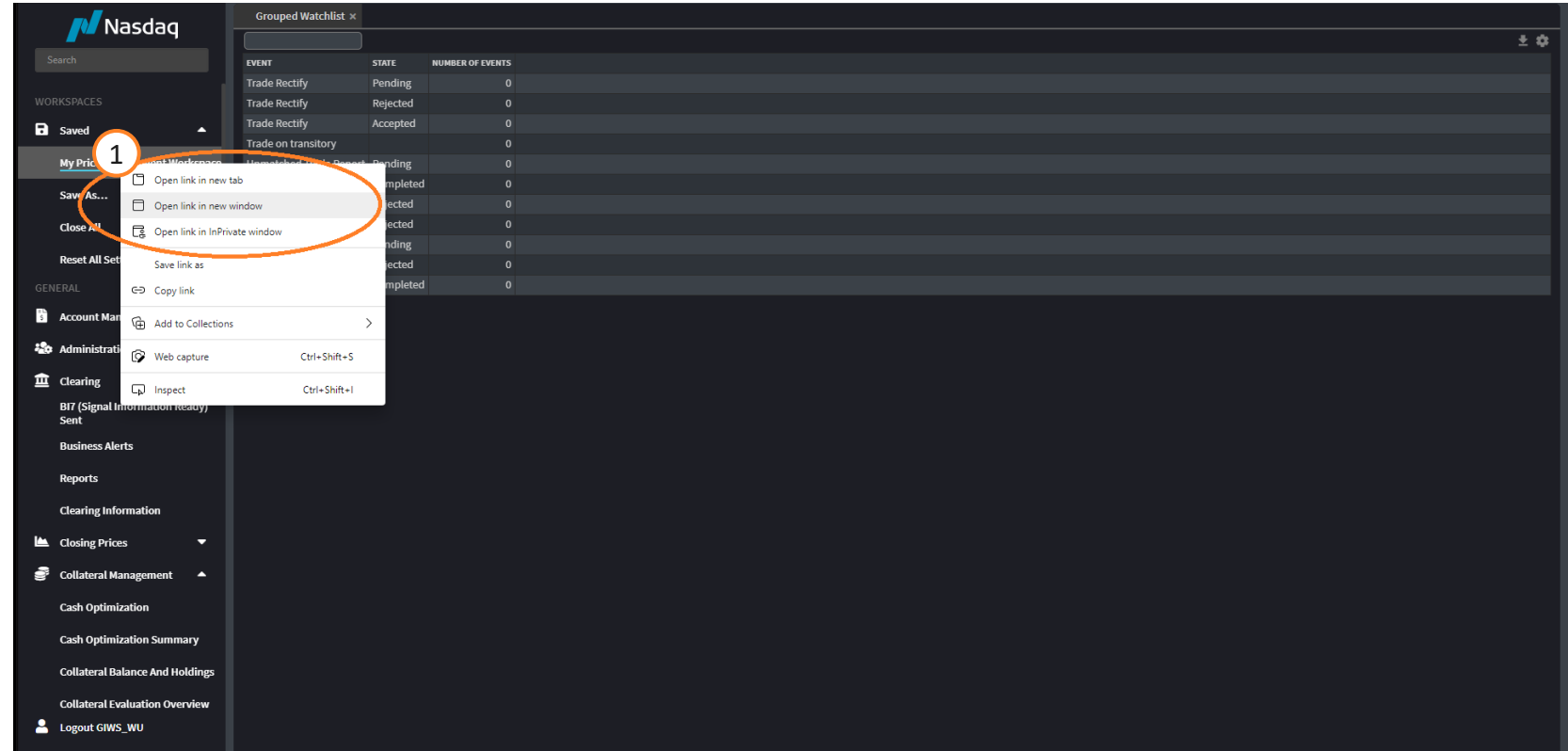
Multi Monitor Support

Working in multiple monitors

1. Right-click a saved workspace and select to open it in a new browser tab that can be dragged to another monitor

Please note

Linking is not allowed between browser tabs meaning that tabs from one workspace can not be transferred over to a workspace opened in another window. Tabs/floating windows can only reside in their workspace.



For further information, please contact:

Nasdaq Clearing
clearing@nasdaq.com
+46 8 405 6880

